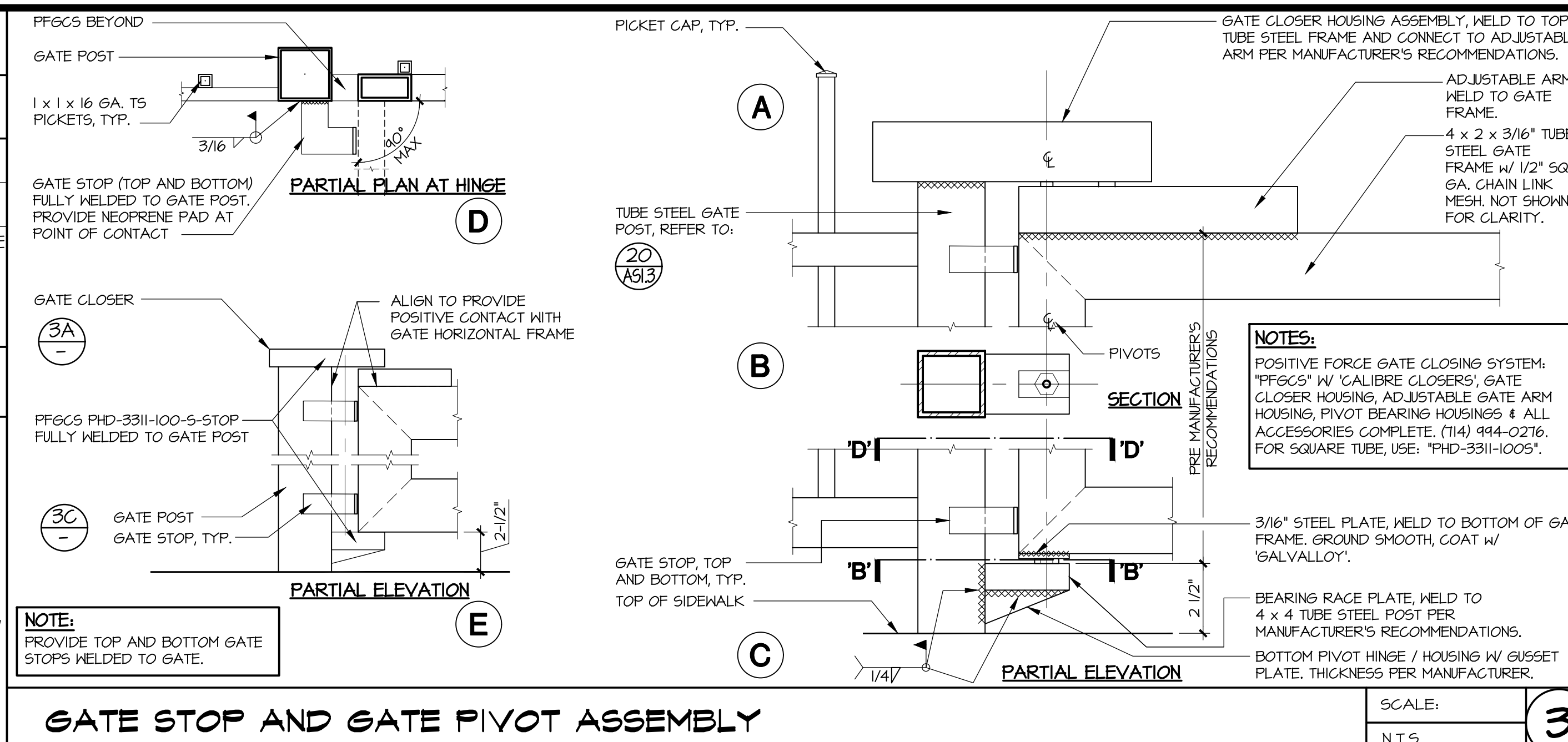
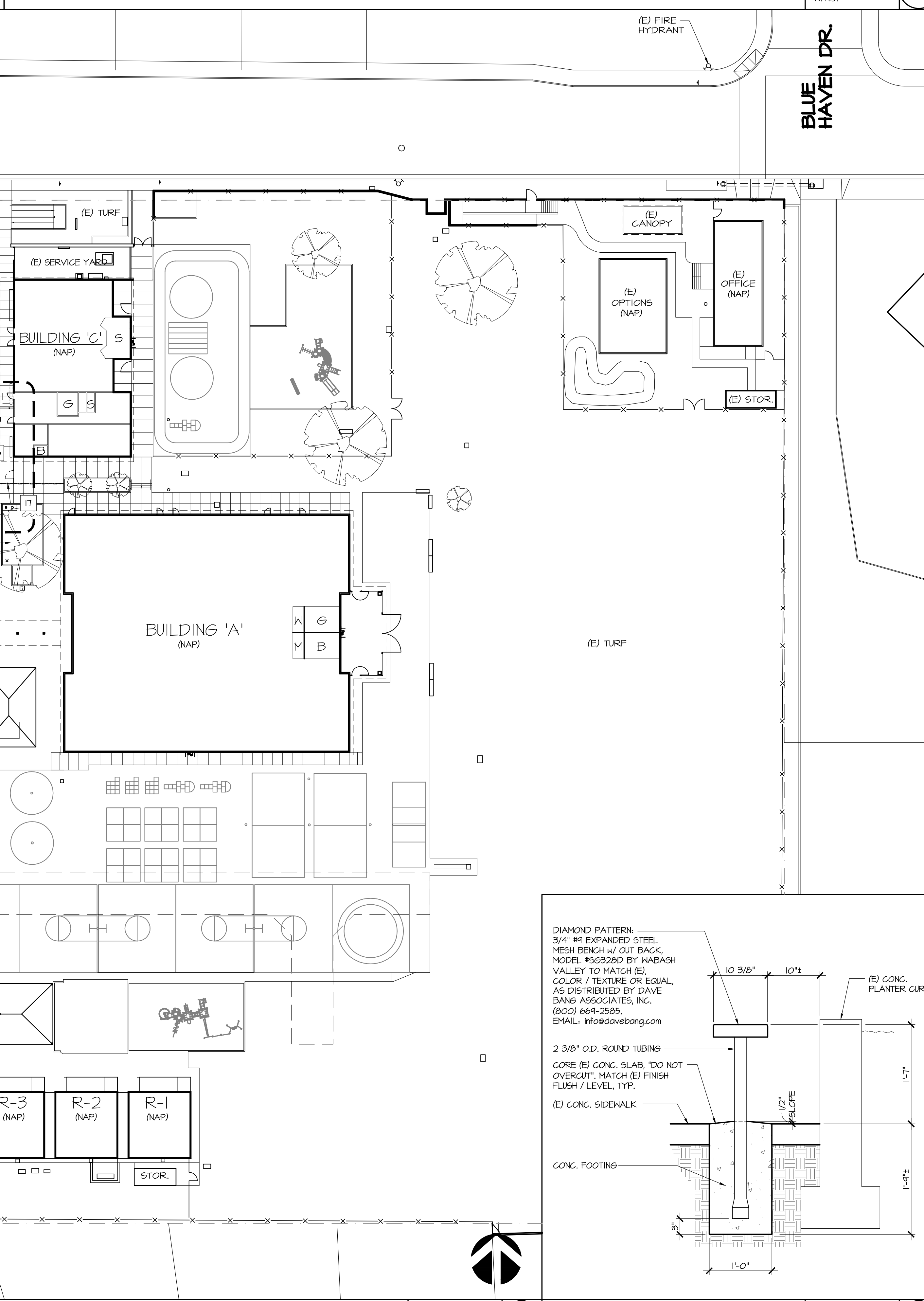
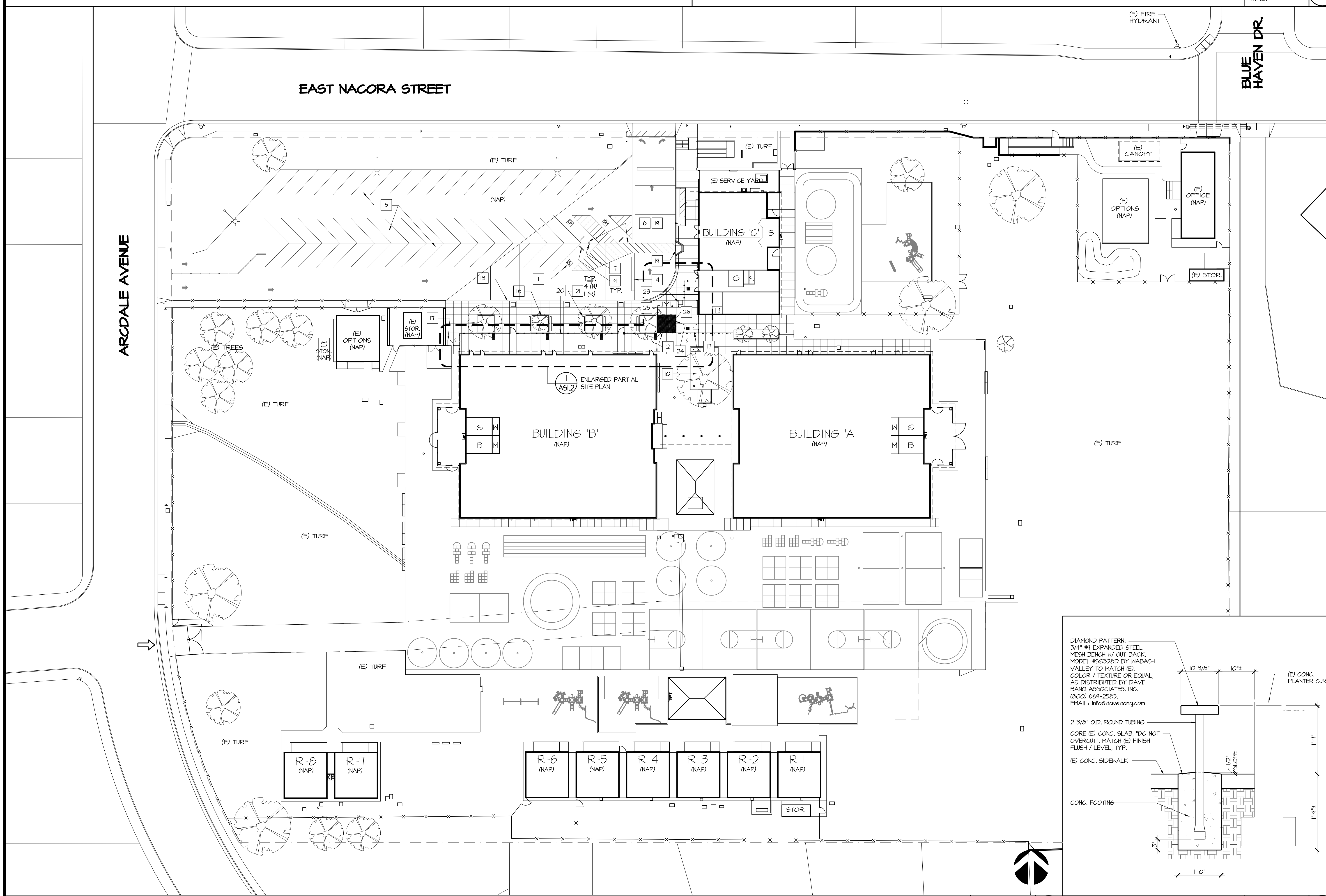


EXTERIOR GATES (REFER TO ENLARGED PARTIAL SITE PLAN, SHEET ASI.2 FOR ASSIGNED GATE LOCATIONS)									
GATE No.	GATE SIZE: WIDTH x HEIGHT	GATE		FRAME		DETAIL			REMARKS
		TYPE	MAT'L FINISH	MAT'L FINISH	HEAD	JAMB	SILL / THRESH.	HDM SET	
61	4'-0" X 6'-0"	TS	STEEL PAINT	STEEL PAINT	3A/-	3D/-	3C/-	O1	POSITIVE FORCE CLOSERS
62	4'-0" X 6'-0"	TS	STEEL PAINT	STEEL PAINT	3A/-	3D/-	3C/-	O1	POSITIVE FORCE CLOSERS
63	FR 3'-0" X 6'-0" (RELOCATED)	TS	STEEL PAINT	STEEL PAINT	-	3D/-	3C/-	O1A	(E) DOUBLE GATES / HARDWARE TO BE RELOCATED AS NOTED, CONNECT TO (N) STEEL POSTS. MAKE ALL NECESSARY MODIFICATIONS AS REQUIRED.

- GATE GENERAL NOTES** GENERAL NOTES APPLY TO ALL GATES UNLESS SPECIFICALLY NOTED OTHERWISE.
- LATCHING AND LOCKING GATES THAT ARE HAND ACTIVATED AND WHICH ARE IN A PATH OF TRAVEL SHALL BE OPERABLE WITH A SINGLE EFFORT BY LEVER TYPE HARDWARE, PANIC BARS, PUSH-PULL ACTIVATING BARS, OR OTHER HARDWARE DESIGNED TO PROVIDE PASSAGE WITHOUT REQUIRING THE ABILITY TO GRASP THE OPENING HARDWARE.
  - HAND ACTIVATED GATE OPENING HARDWARE SHALL BE CENTERED 36 INCHES ABOVE THE FLOOR.
  - MAXIMUM EFFORT TO OPERATE GATES SHALL NOT EXCEED 5 LBS.
  - CONTRACTOR SHALL MAKE ALL NECESSARY FINAL ADJUSTMENTS AFTER GATE HARDWARE IS INSTALLED TO ASCERTAIN GATES OPERATE PROPERLY.
  - SUBMIT SHOP DRAWINGS AND COLOR SAMPLES FOR REVIEW, PRIOR TO PROCEEDING.
  - S.C. TO PROVIDE ALL EXTERIOR 180° SWING GATES W/ GATE STOPS, RE:
    - DRILL WEEP HOLES IN BOTTOM OF PANIC HARDWARE FOR WATER DRAINAGE.
    - ALL FENCING, GATES AND FRAMES SHALL BE PAINTED TO MATCH EXISTING.
  - FINISHES: PLASTISOL - COAT SURFACES WITH SUPERIOR "AAMA" 2604-05 SPECIFIED POWDER COAT BENCH, BENCH, FRAME AND POSTS. COLOR: MATCH (E) FENCE / GATES / BENCHES. FIELD VERIFY COLOR / FINISH, PRIOR TO PROCEEDING. MIN. TWO (2) COATS.
  - FOR GATE HARDWARE SETS, REFER TO SHEET T.J.



- SITE PLAN KEYNOTES**
- (E) ACCESSIBLE PARKING STALLS: A# 03-112433.
  - (E) FR. 3'-0" X 6'-0" GATES / HARDWARE TO BE RELOCATED.
  - (E) CHAIN LINK GATE: PROTECT.
  - (E) DRINKING FOUNTAINS: A# 03-112433.
  - (E) PARKING STALLS: PROTECT.
  - (E) ADA PARKING SIGNAGE POST, A# 03-112433.
  - (E) ADA "VAN" PARKING SIGNAGE POST, A# 03-112433.
  - (E) ASPHALT PAVING: PROTECT.
  - (E) WHEEL STOP: PROTECT.
  - (E) LANDSCAPE PLANTER: PROTECT.
  - (E) CONC. PAVING AREAS: PROTECT.
  - (E) "TOW-AWAY" SIGN: A# 03-112433.
  - (E) CURB: PROTECT.
  - (E) SPEED BUMPS: PROTECT.
  - (E) LIGHT POLES: PROTECT.
  - (E) PLANTER BOX: PROTECT.
  - (E) FENCE AND GATES: PROTECT.
  - (E) ACCESSIBLE STAIRS: PROTECT.
  - (E) ACCESSIBLE CURB RAMP: PROTECT.
  - 6'-0" HIGH ORNAMENTAL FENCING / GATES / FOOTINGS, REFER TO: (A) ASI.4
  - 10'-0" LONG METAL BENCHES, REFER TO: (2)
  - (E) METAL BENCH / POSTS - RELOCATED.
  - (E) PLANTER POT / BOX - RELOCATED.
  - 3'-0" HIGH ORNAMENTAL FENCING / FOOTINGS, REFER TO: (A) ASI.4
  - SLOPED CONCRETE SIDEWALK TO MATCH (E), 5% MAXIMUM SLOPE. ALL TRANSITIONS FLUSH.
  - REMOVE (E) FENCING.



- LEGEND**
- PROPERTY LINE (NAP) NOT A PART OF SCOPE OF WORK
  - EXISTING CHAIN LINK FENCE / GATE
  - ORNAMENTAL THROUGH IRON FENCE / GATE
  - EXISTING BUILDING

**ZIEMBA + PRIETO ARCHITECTS**  
 601 South Glenwood Blvd. • Suite 400 • Burbank, CA 91502  
 P: (818) 841-2885 • F: (818) 841-7782 • www.ziembaandprieto.com

**SHELYN ELEMENTARY SCHOOL**  
 1950 E NACORA ST  
 ROWLAND HEIGHTS, CA 91748

**SITE PLAN, KEYNOTES, EXTERIOR GATE SCHEDULE & DETAILS**

DATE: 04/03/17  
 JOB NO.: 160504  
 SHEET NO.: ASI.1